

AFT Arrow™ 6

GSC Module

Take Your System Designs to a New Level

The Goal Seek and Control (GSC) Module automates identification of input parameters that yield desired output values and simulates control functions

This module has been designed specifically for AFT Arrow and can work with your existing AFT Arrow system models.



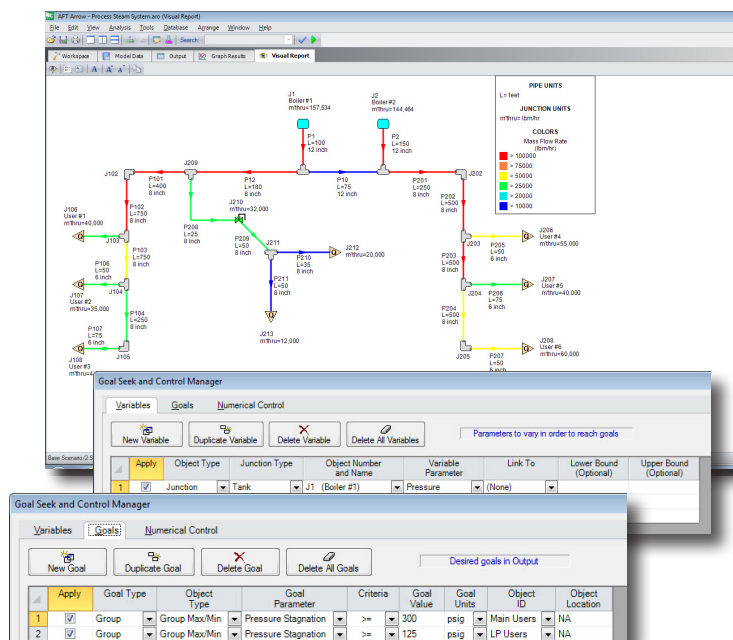
Goal Seek & Control GSC Module

Benefits

- Evaluate the effects of changing system parameters
- Save time by avoiding manual iterative analyses

Capabilities

- Define multiple variables and goals at multiple locations throughout the system
- Define goals as single point, differential or sum
- Modeling parameters for variables or goals include
 - Compressors/fans - speed, flow, pressure rise
 - Valves - open percent, Cv/K, delta P, flow
 - Tanks - pressure, temperature
 - Control valves - setpoint, open percent
 - Orifice - diameter, area
 - Heat exchangers - heat rate, temperatures, area, U value
 - Spray discharge - area, discharge coefficient, exit pressure
 - Pipes - friction, scaling, insulation thickness



"AFT Arrow", "Applied Flow Technology", "Dynamic solutions for a fluid world" and the AFT logo are trademarks of Applied Flow Technology Corporation.